

Getting Started with TDSPWR3

You can use this side of the Quick Reference to start to take measurements with the Power Measurement and Analysis Software (TDSPWR3). The other side contains a complete menu tree for TDSPWR3 software.

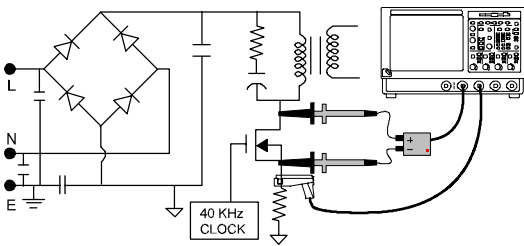
NOTE. For complete operating instructions and General Safety information, refer to the Online Help for the application.

The TDSPWR3 Power Measurements and Analysis software transforms a digital oscilloscope into an analysis tool that measures and analyzes power dissipation in power supply switching devices and magnetic components. It then generates detailed test reports in customizable formats.

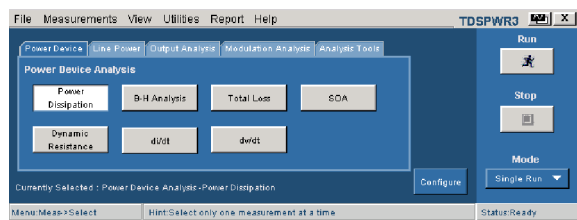
Performing a Switching Loss Measurement

To measure Switching Loss, follow these steps:

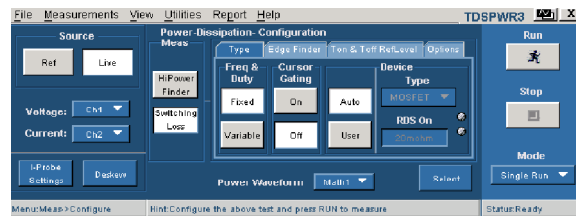
1. Select File> Run Application> TDSPWR3 in the oscilloscope menu bar.
2. Connect the probes to the device under test. For example, the test setup for Switching Loss is shown below.



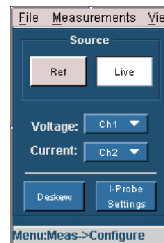
3. In the Power Device tab, select Power Dissipation. Press Configure.



4. Select the Switching Loss option.

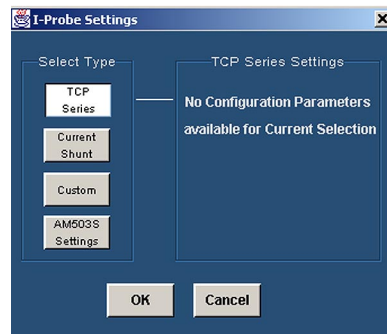


5. Configure the options in the common configuration panel.

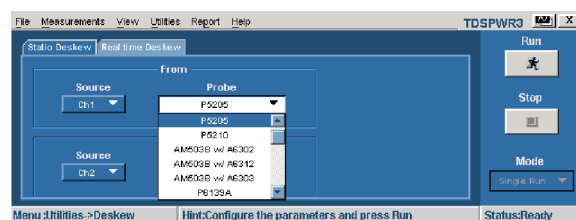


6. Select the Source and assign the Voltage and Current channels.

7. Set the appropriate I-Probe settings.



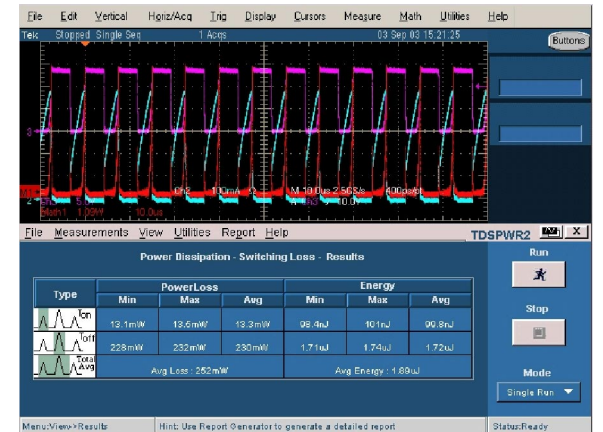
8. Select the Deskew option or select Utilities>Deskew to deskew.



9. Push the "Running Man" button to start taking measurements. If the measurement is successful, the application automatically displays the results. You can also view the results by selecting View> Results from the application menu bar.



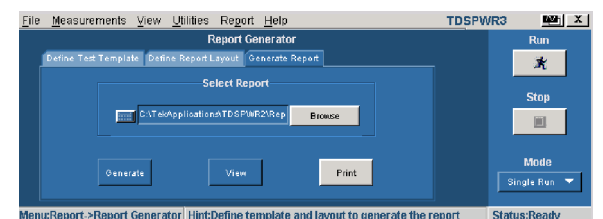
10. The application displays results for the measurement.



11. To generate a report, select Report> Report Generator.

12. Select the template in the Generate Report tab.

13. Select the Generate button to post the test data to the template.



For up-to-date information on Tektronix oscilloscope solutions for Power Measurement, access the www.tektronix.com/Masurement/scopes/web page.

TDSPWR3 Ordering Information

Supports the TDS5000, TDS6000¹, TDS7000¹, and CSA7000¹ series oscilloscopes; refer to the *Optional Applications Software on Windows-Based Oscilloscopes Installation Manual* for a complete list of supported models. The applications CD includes a PDF file of the installation manual.

If you order Option PW3 along with TDS5000/TDS7000/TDS6000/CSA7000 the Power Analysis and Measurements Software will already be installed and enabled.

To order an upgrade for an existing oscilloscope:

- Order the TDS5UP Option PW3
- Order the TDS7UP Option PW3
- Order the TDS6UP Option PW3
- Order the CSA7UP Option PW3

Recommended Accessories

Opt. 2M, Opt. 17 for TDS5000

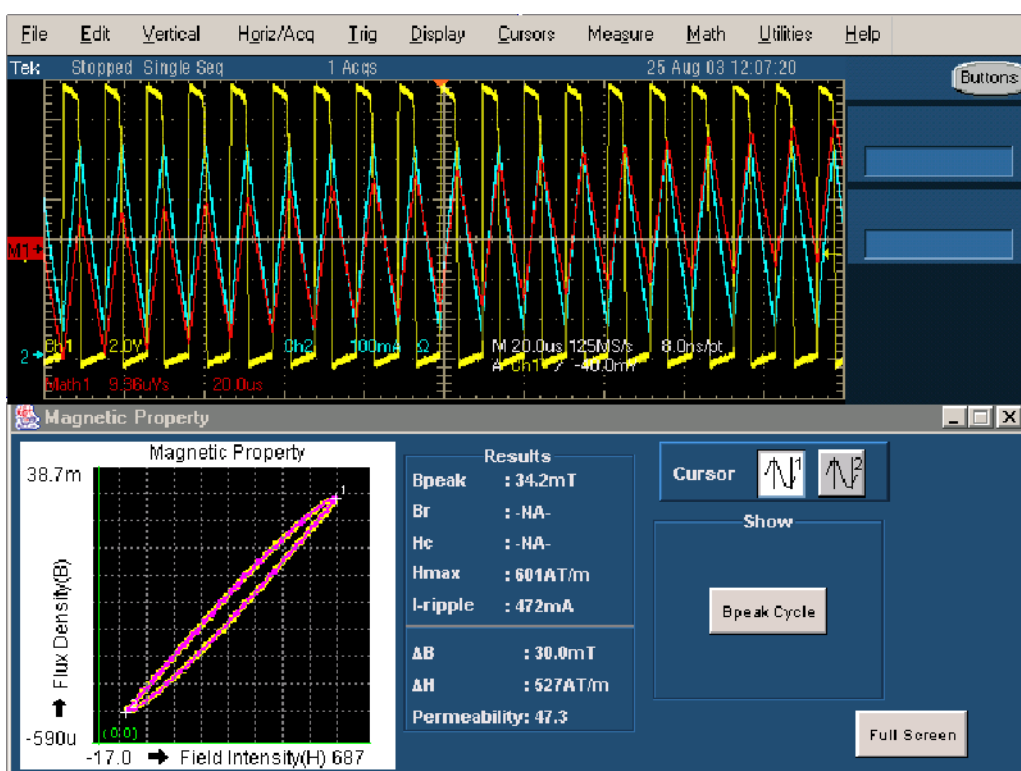
Opt 2M, 3M, 4M for TDS7000 and CSA7000

Deskew Fixture-067-1478-00

Current Probe-Order TCP202, TCP300, TCP400 or AM503B with A63XX probes

Differential Probe-Order P5205, P5210, P5200 and ADA400A

¹Probe adapter: - TCA-1MEG, while using 1 MΩ voltage probes with TDS6000/CSA7000/TDS7154/TDS7254/TDS7404



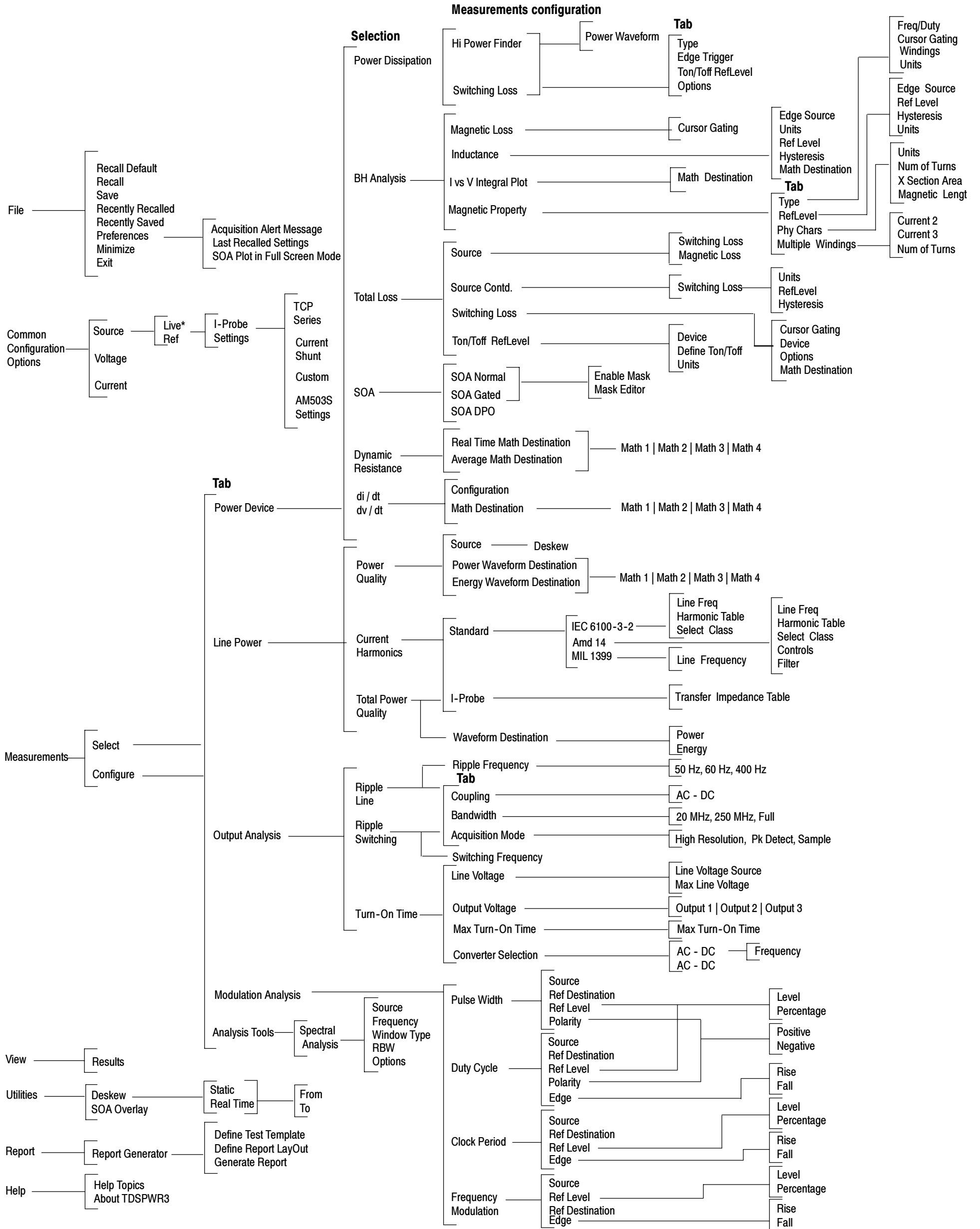
TDSPWR3 Power Measurement and Analysis Reference

www.tektronix.com



071-1397-00

TDSPWR3 Menu Tree



* You can also select Math channels with Live signals.